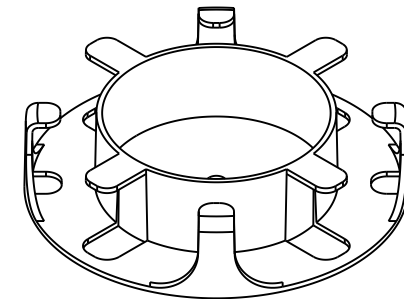
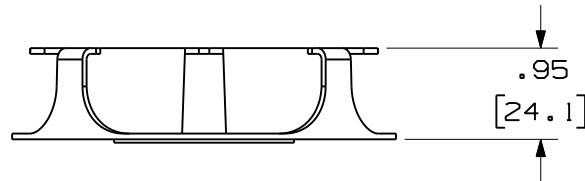
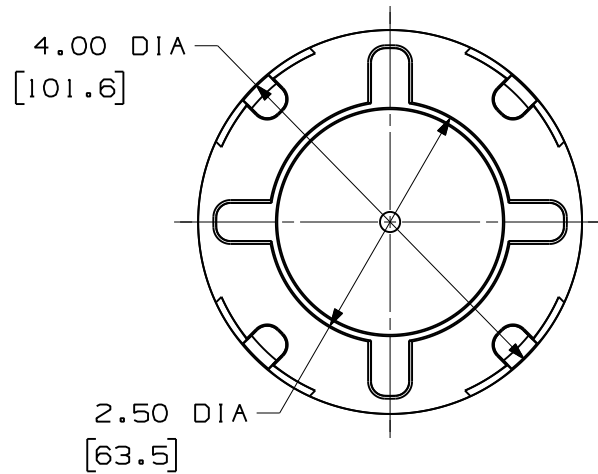


THIS COPY IS PROVIDED ON A RESTRICTED BASIS AND IS NOT TO BE USED IN ANY WAY DETRIMENTAL TO THE INTERESTS OF PANDUIT CORP.


| PANDUIT P/N | WEIGHT |
|-------------|----------------------------|
| FMS1 | 0.06 LBS/EACH 27 g/EACH |



NOTES:

- VISIT OUR ON-LINE CATALOG AT WWW.PANDUIT.COM FOR A CURRENT LIST OF PARTS APPLICABLE WITH THIS PRODUCT.
- COMPONENTS:
2 - SPOOLS WITH DOUBLE SIDED TAPE
- DIMENSIONS IN PARENTHESIS ARE METRIC.

| REV | DATE | BY | CHK | DESCRIPTION | ECN | R | CUST | SUP | OTH |
|-----|----------|-----|-----|------------------------|-----|---|------|-----|-----|
| 01 | 12-15-10 | EFK | | RELEASED TO PRODUCTION | | | | | |

| | |
|-----------------------------------------------------------------------------------------------------------------------------------------------------------------------|-----------------------------------------------------------------------------------------------------------------|
| FIBER MANAGEMENT SLACK SPOOL CUSTOMER DRAWING | |
|  | PANDUIT ™ CORP. TINLEY PARK, ILL 60477 |
| ALL DIMENSIONS ARE GIVEN IN INCHES, UNLESS OTHERWISE SPECIFIED. DIMENSIONAL TOLERANCES ARE: (.X) ±.03 (.XXX) ±.010 (.3) ±.010 (.XX) ±.03 (.8) ANGLE | DRAWING FILENAME V10223CV_DC/02B SCALE 1/2 PART NO. FMS1 DRAWING NO. 10223-16 SIZE A |
| THIRD ANGLE PROJECTION | A.B.S. |
| DRAWN BY RVLE DATE 02-24-05 CHK'D | REVIEW DRAWING NUMBERS |